



ANNUAL REPORT

2023

Copyright © Heifer International Nepal, 2023

Content and Production: Prabin Gurung, Rabin Raj Niraula, Regeena Regmi
Reviewers: Kishor Kafle, Prakash KC, Sabina Pradhan, Shakuntala Rasaili, Sumnima Shrestha

Published by Heifer International Nepal

This report is printed on wood-free paper (except for the cover and back page)

Table of Contents

Heifer International Nepal	1
Signature Programs	3
25 Years in Nepal: Our Impact	9
Government Collaboration for Sustainable Impact in Nepal	11
Navigating Agricultural Finance Challenges in Nepal	12
Resilient Agro Initiatives	13
Innovations in Vegetable Value Chains	14
Women’s Digital Empowerment	15
Active Projects	17
Heifer Cornerstone for Just and Sustainable Development	20
Statement of Financial Position	21
Heifer International & Sustainable Development Goals	23
Acronyms	24
Major Donors, Stakeholders & Partners	26

Message from Country Director



Dear Readers,

I am delighted to share with you the accomplishments of Heifer International in Nepal throughout the fiscal year 2023. Our commitment to alleviating poverty and fostering sustainable living incomes has driven us to new heights, and it is with immense pleasure that I extend my gratitude to all those who have contributed to our success.

On its 26th year of serving the smallholder farmers in Nepal, Heifer has worked diligently to enhance the institutional capacity of 277 Social Entrepreneurs' Women's Cooperatives, representing 15,265 Self Help Groups and 345,000 farming families in 50 districts of Nepal.

One of the key highlights of this year has been the historical "Passing on the Gift" of 100 Heifers and 8 breeding bulls to the Government of Nepal. This marks the largest shipment of cattle to Nepal in its known history, made possible by the dedicated efforts of the Heifer Korea team. These high-yielding Heifers and Bulls are the cornerstones of the transformation of the dairy sector of Nepal. You will be able to read about it in much more detail on the pages to follow.

This year has also been instrumental in introducing innovative technologies and setting up state-of-the-art infrastructures to support the small-scale farmers' communities. In collaboration with the Local Government in Palpa, we have supported farmers in setting up Milansar Vegetable Processing Center with ozone washing facility, adding value to the produce and bringing in higher profits for the farmers. Similarly, great progress has been made in the ginger value chain, as farmers have received organic certification for their products, opening the gates for export. Heifer has also supported the cooperative in setting up a climate-smart ginger drying solar facility, putting an end to their prolonged reliance on firewood.

Guided by the 12 Cornerstones for Just and Sustainable Development, we have enabled the communities we work with to internalize Locally Led Development and be the change and impact they want to see. None of these accomplishments would have been possible without the unwavering support and collaboration with Federal, Provincial, and Local Governments, Our Donors, Development Partners, Private Sector, Public Institutions, and the farmers themselves.

I am sure we can continue this journey and create resilient communities in the days to come.

Dr. Tirtha Raj Regmi
Country Director

Heifer International Nepal

Heifer International started working in Nepal since 1957 with the gift of high-yielding improved breeds of cattle, sheep, and pigs for cross breeding and parent stock of poultry, along with incubator, upon request from the Government of Nepal. With the aim to end hunger and poverty, Heifer International Nepal signed the first General Agreement with the Social Welfare Council in 1997.

Today with 26 years of service, Heifer International Nepal has been able to reach more than 345,000 families and has transformed their livelihood with a focus on agriculture and livestock development programs. These families have been organized into more than 15,265 Self Help Groups (SHGs), 277 Social Entrepreneur Women Cooperatives (SEWC), and 3 District Unions, where 99% of the members are rural women.

Heifer International Nepal aims to bring families from a state of poverty and vulnerability to sustainability and resilience through their engagement in competitive, sustainable, and inclusive goat, dairy and vegetable value chain enterprises, adopting the Values Based Holistic Community Development (VBHCD) approach. Heifer commits to supporting the target of achieving self-sufficiency in the goat and dairy sector. Heifer is currently working in 32 districts with more than 40 local Non-Governmental Organizations as local partners, civil society, private sector, and academia. Heifer works closely with the Ministry of Agriculture and Livestock Development, provincial and local governments in implementing the projects.

As of June 2023, Heifer has partnered with 73 local governments introducing the VBHCD approach to benefit the larger population. Heifer's engagement with local government and collaboration with municipalities and rural municipalities help to promote sustainable agriculture practices, and livestock development and improve the livelihoods of smallholder farmers. Heifer's approach of strengthening Social Entrepreneur Women's Cooperatives (SEWCs) to sustain the outcome of intervention has not only increased the outreach but also bolstered the outcomes that are achieved during the project period. Heifer applies the market system development approach in livestock, dairy, vegetable, and local poultry to facilitate market linkages, achieve lasting changes and increase economic opportunities for smallholder farmers.

Our Mission

“Ending Hunger and Poverty While Caring for the Earth”

- We work in partnership with the communities to end hunger and poverty.
- Our programs support entrepreneurs, creating lasting change from the ground up.
- It begins with a seed investment in livestock or agriculture, followed by mentorship to help project participants build businesses, and gain access to the supply chain and markets.
- These families can earn a living income and can continuously lift the communities, as they train the next generation of leaders.





A farmer with her mustard harvest in Bardiya

Signature Programs

Strengthening Smallholder Enterprises of Livestock Value Chain of Poverty Reduction and Economic Growth in Nepal (SLVC)

SLVC program aims to shift the agricultural ecosystem for smallholders in Nepal. The program strengthens the institutional, governance, and financial management capacity of the cooperatives, linking them with the appropriate markets and consumer bases while creating infrastructures to reinforce the market. It is also increasing the provision of business development services – access to insurance, access to finance, and access to input supply and services – all while improving the enabling environment in partnership with the Ministry of Agriculture and Livestock Development and private sectors along the goat, dairy, vegetable, and local poultry value chains.



From traditional to improved, there has been a notable change in the farming practices of the small holder. SLVC has made a lasting improvement in animal housing, attention is also provided to the animal's health with regular checkups, deworming and vaccination of animals.

SLVC has put an end to the traditional practice of haphazard grazing of animals in the jungles and has encouraged planting of nutritious fodder and forage in barren lands, reducing land degradation and carbon footprint.





The cooperative has become a business hub for the smallholder farming families, bringing much needed services to the rural community. The services range from marketing to access to final to animal insurance. The SLVC project helped establish collection centers in the villages. These centers play a vital role in aggregation and collection marketing, reduced transaction costs and improved trading efficiency.

SLVC has undertaken a significant initiative to bridge the gap between the demand and supply of animal health services. For this, numerous individuals in project sites are trained to become Community Agro-vet Entrepreneurs. These entrepreneurs play a crucial role in not only offering essential animal health services to farmers but also in elevating the status of agro-vet entrepreneurship within the community. Serving as vital pillars for farmers in building resilience against diseases affecting livestock, they actively motivate and guide farmers to embrace entrepreneurship, assisting them in establishing their own ventures within the community. In doing so, they not only address the immediate health needs of animals but also contribute to the empowerment and economic development of the local farming community.



With the help of the Agri transport vehicles, the cooperatives provide door-to-door collection service which reduces the hassle farmers face to arrange delivery vehicle for their produce. With the regular availability of Agri-transport, post-harvest loss is reduced which is a severe problem for perishable products. Moreover, the placement of agri-transport vehicles has started to increase members, business as well as coverage for the cooperatives, which is a milestone for expanding services of the cooperatives.

The Milkyway- Transforming the Dairy Sector of Nepal

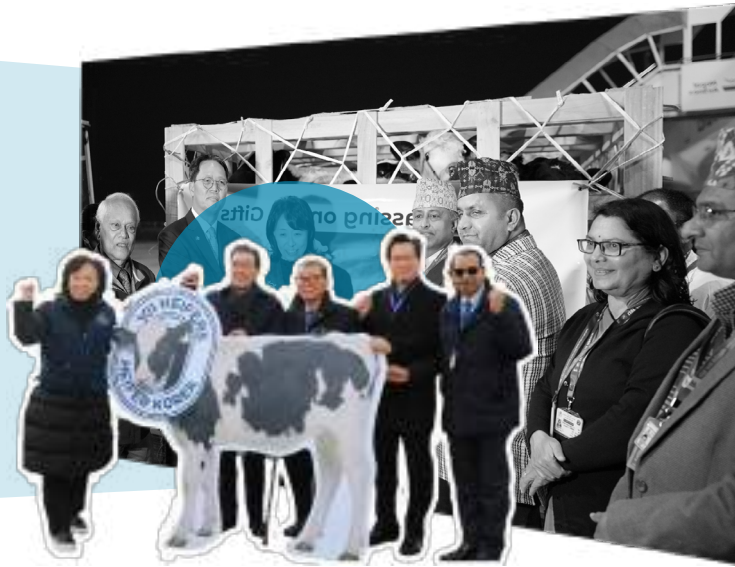


Heifer International first gifted high yielding improved breeds of cattle, sheep and pigs for cross breeding and parent stock of poultry upon the request of then government of Nepal in 1957. This was the first intervention of Heifer in Nepal in its livestock and poultry sector.

After the Korean War, from 1952-1976 Heifer International supported Korea with a gift of livestock. Those cattle played a vital role in the transformation of the Korean dairy industry making it one of the biggest and best in the world today. The Korean dairy farmers are grateful for this gift and now have passed on this gift to the farmers of Nepal, completing a full circle of giving back.



The Milky Way project is the joint initiative of the governments of Nepal, South Korea, and Heifer International aimed at transforming the dairy sector of Nepal through the genetic improvement of cattle. The project will develop the local dairy sector, commercially and sustainably through the creation of a vertically integrated dairy value chain. This will increase income and job opportunities for local farmers and employees in the dairy sector. The development of the local dairy value chain industry needs to be commercially viable to be sustainable since the success of the project will help improve livelihoods.



Under this initiative, high genetic merit bulls from South Korea, which Nepal has received as a gift are placed at the National Livestock Breeding Offices for semen collection and distribution. The elite nucleus herd will be set up to supply high-quality breeding bulls required by the National Livestock Breeding Offices in the future. The nucleus herds will provide mating facilities to produce young bulls and female calves. The objective of the project is to alleviate the present deficit of milk through quality bulls. The rise in the income of dairy farmers is possible through increased productivity and quality milk through reduced costs of production.

Along with the bulls, 100 Heifers were gifted from Korea to Nepal, out of which 80 of the Heifers are placed in Kamalamai Municipality of Sindhuli in 50 farming families, whilst 20 of them are gifted to the government of Nepal. The heifers in Kamalamai are a beacon of hope to the farmers. They bring with them a promise of economic prosperity and a better chance at life for the families. The first progeny of these Heifers from Sindhuli will be Passed on to other farming family in the area as per the Passing on the Gift modality of Heifer International.









Value Chains for Inclusive Transformation of Agriculture (VITA)

The Value Chains for Inclusive Transformation of Agriculture program's goal is to assist 70,000 smallholder producers, including landowners and landless, and laborers involved in selected supply chains. The Inclusion of smallholder producers and poor and vulnerable rural populations will be ensured by selecting supply chains that promise to deliver the biggest benefits to the largest number of poor by propagating technologies with women beneficiaries and youth. The program will have a mandate to operate nationwide as part of its scaling-up objective, focusing intensive activities within 9 districts where Heifer will focus on strengthening the supply chain and building social capital.

This program is co-designed and co-funded by the International Fund for Agricultural Development (IFAD), the Government of Nepal, and Heifer International. Agricultural Development Bank Ltd (ADBL) is the lead implementor, while Heifer International is responsible for implementing the component on inclusive supply chain development. The program focuses on seven main value chains which are vegetables, goats, fish, cereal, potato, dairy, and banana.

25 years in Nepal : Our Impact



 Past Projects
 Active Projects



153,000 Itrs
Milk Sales in fy 23



312,000 Heads
Goat Sales in fy 23



16,000 Itrs
Increase in Milk Sales per day



529
Rural Collection Points



172
Collection Centers



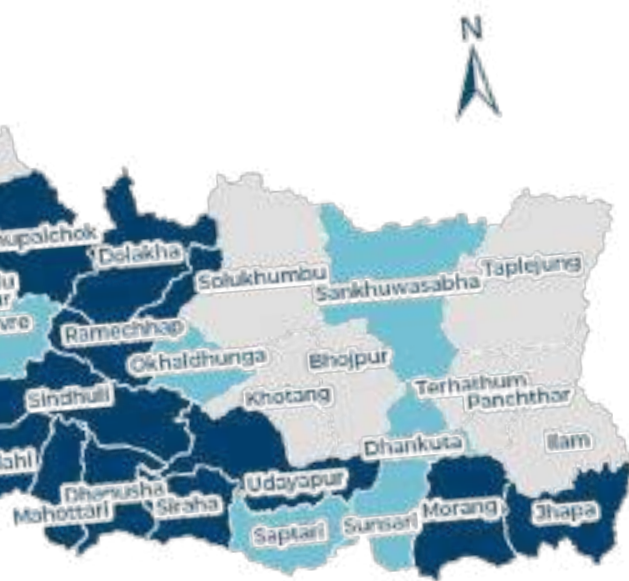
345,000+
Families Reached



113
Agri Transport Vehicles Placed



800+
Community Agro Vet Entrepreneurs



50

Districts Reached



15,265

Self Help Groups



277

Social Entrepreneurial Women's Cooperatives



17,835 Ha

Fodder Plantation



5

Breeding Resource Centers (CIGIG)



MoU signing ceremony with the local government

Government Collaboration for Sustainable Impact in Nepal

In Nepal, Heifer has initiated a government partnership model aimed at collaborating with local governments to meet the needs of communities. In contrast to traditional development aid models, Heifer's strategy involves leveraging resources from local governments to foster ownership and sustained investment, even beyond project completion. This unique approach establishes Heifer as a long-term collaborative partner, providing crucial technical assistance and services to local communities while assisting the government in attaining its development objectives.

The government partnership model champions a locally led development approach, where local governments determine priorities, communities choose to participate, local resources are mobilized, and local structures are reinforced for sustainability.

As of June 2023, Heifer Nepal has entered project agreements with 73 municipalities/rural municipalities, securing a USD 22.34 million grant from local governments and contributing USD 6.8 million in a 70:30 cost-sharing model to support smallholders in improving goat production, productivity, and value chains.

Key features of this established partnership include Heifer's Values Based Holistic Community Development

(VBHCD) model, empowering local communities to shape their development agendas and achieve sustainable living incomes through personal and collective efforts. The participatory approach involves communities in all stages of development, fostering greater project participation. Heifer's inclusive programs align with the 'leave no one behind' agenda, covering extensive communities in line with local government interests, with a focus on benefiting poor, disadvantaged women smallholders—the primary target group for both Heifer and local governments.

Furthermore, Heifer projects actively cultivate partnerships and networks among diverse actors, including government, civil society, and the private sector, to collectively achieve development goals. The engagement of government, local stakeholders, and beneficiaries in project management committees ensures that resources effectively reach targeted communities, enhancing project ownership and sustainability.

In conclusion, the government partnership model not only addresses holistic community development but also empowers communities for locally led development, serving as a catalyst in the pursuit of achieving Sustainable Development Goals (SDGs).



A dairy Farmer of Harabhara SEWC in Parbat

Navigating Agricultural Finance Challenges in Nepal

This year, the economy, including the agriculture sector, encountered significant challenges due to the cumulated and combined impact of COVID-19 and a liquidity crunch in Nepal's banking industry. This caused BFIs to cease lending, resulting in a notable upswing in the demand for agriculture loans. Furthermore, the sector grappled with issues such as elevated interest rates, prolonged loan processing times, and the requirement for collateral in agribusinesses.

Similarly, the government's halt in repaying interest subsidies claimed by the BFIs under interest subsidy schemes for women entrepreneurs and agriculture businesses, coupled with the failure to provide reimbursements for agriculture insurance premiums to insurance companies, added to the sector's complexities.

Even with these challenges, Heifer, through its partnership with BFIs, managed to provide loans amounting to USD 17.2 million to 10,610 women-led farm businesses as of June 2023. Moreover, an additional USD 2 million was disbursed only in this fiscal year. Nevertheless, this amount is deemed insufficient given the loan requests in its project areas. Heifer remains committed to strategic efforts, aiming to improve access to finance and attract investments, including concessional loans, to contribute significantly to social, environmental, and economic impacts in Nepal.

Organic Ginger

Transforming Rural Economy with Quality, Certification, and New Market Prospects

The ginger farmers from Heifer supported Galdha Social Entrepreneurs Women's Cooperative in Palpa have come a long way from their traditional ginger growing practices as they have been certified Organic by CERES, which is an international inspection and certification body for organic food, sustainable textiles, climate, and environmental standards.

This milestone achievement is pivotal for Heifers work in the spice value chain and to further explore export markets. Galdha SEWC is one the first women led agri-businesses in Nepal to receive organic certification for their produce. This certification is the fruit of labor of three years. Currently, 272 farmers are producing organic Ginger in 40 hectares. With Heifer's support, the coop has established Ginger processing Center with capacity of 500 metric tons.



Pachbaiya couple with their ginger harvest in Galdha, Palpa

Resilient Agro Initiatives

Climate Smart Agriculture

Heifer International has been supporting 345,000 farming families to successfully shift from traditional livestock production methods to efficient and resilient livestock production methods aiming at improving production, health, economic return while reducing environmental impact. Targeted new CSA (Climate Smart Agriculture) practices included the adoption of improved animal sheds, manure management, improved animal health, vaccination, breed improvement, cultivated fodder/forage and crop residues-based feeds which enables resilient and climate smart livestock production system.

Heifer International has completed a study in partnership with Alliance of Bioersity International and CIAT, a CGIAR Research initiative, on Climate smart agriculture practices which highlighted the benefits of adoption of CSA practices mainly in livestock sector in context of Nepal. Farmers have successfully substituted grazing with cultivated fodder/forage and crop residues in their livestock feed basket compared to non-Heifer supported



Kamala Bhandari carries fodder for her animals in Kapilvastu

farmers where 60-70% of feed basket still is grazing. With high adoption of CSA interventions among the farmers, land use intensity falls by between 74-85%, water use intensity by between 87-98%, and GHG emission intensity by between 74-91%. The intensity of GHG emissions, and land and water use per kg of goat meat were lower in farms adopting the improved animal management practices compared to those following traditional methods. Improved sheds were found to be the most effective intervention to reduce emissions intensity as it helps in manure management that can be applied in farm increasing benefits for the farmer. This is followed by improving the feed basket through the addition of improved forages and feed additives which improves digestion and increases productivity while replacing the commercial feeds and grains. In their livestock feed basket compared to non-Heifer supported farmers where 60-70% of feed basket still is grazing. With high adoption of Climate Smart Agriculture (CSA) interventions among the farmers, land use intensity falls by between 74-85%, water use intensity by between 87-98%, and GHG emission intensity by between 74-91%. The intensity of GHG emissions, and land and water use per kg of goat meat were lower in farms adopting the improved animal management practices compared to those following traditional methods.

Improved sheds were found to be the most effective intervention to reduce emissions intensity as it helps in manure management that can be applied in farm increasing benefits for the farmer. This is followed by

Innovations in Vegetable Value Chains

Milansar Vegetable Processing Center

The Milansar Social Entrepreneurs Women's Cooperative, with support from Heifer International and the Government of Nepal, has established a vegetable processing and trading center. Palpa is known for its abundant vegetable production, but the farmers have long struggled to find markets and fair prices for their hard work. The vegetable processing and trading center connects these farmers to the market securing fair prices proving the potential of such market infrastructures. It is the result of a collaborative effort, with investments totaling USD 155,680. Heifer International contributed USD 63,467 for infrastructure and machinery, the provincial government added USD 51,147, the Municipality invested USD 22,400, and the



Agriculture is needed to produce food, so agriculture is exempted on emission reduction targets, but it is always good to reduce emissions where possible to contribute to the larger goal and CSA can help achieve this.

- Dr. Arun Bhatta, Senior Agri Development Officer, Ministry of Agriculture and Livestock Development

improving the feed basket through the addition of improved forages and feed additives which improves digestion and increases productivity while replacing the commercial feeds and grains. Also, better results are recorded with the adoption of improved breeds that increase production per input and help in reducing the number of livestock for the same amount of production and productivity. Through the strengthening of smallholders' livestock value chain, the productivity of goat increased by 40% and per doe goat offtake has doubled resulting in an increase in actual income of 14%. The extent of fodder/forage cultivation covering 16,000 hectares of land has significantly contributed to achieving the government's Nationally Determined Contribution (NDC) target on fodder plantation in 6,000 hectares. The impact of cultivated forages, feed additives and improved shed have been positively assessed contributing to reduction in emission intensity by 40, 50 and 70 percent respectively.

cooperative itself put in USD 18,666. Equipped with modern ozone washing technology, this facility is now an essential part of the vegetable value chain realizing the 'Access to Market' component of the Cooperative as a Business Hub Model.

Kamala Bhandari, the chairperson of Milansar cooperative proudly states, "Our long-held dream has finally come true. We can collect and process the vegetables and find better markets for the farmers" This dream is not about physical assets; it is about empowerment. For farmers to truly prosper, they must have control over every aspect of the value chain.

This center is set to benefit an estimated 1,700 farmers



Farmers utilize the ozone vegetable washing facility in Palpa

from 19 different cooperatives in the region. The center allows farmers to bring their goods early after harvest and it serves multiple purposes. It acts as a hub for collecting, sorting, grading, and washing vegetables, thereby improving quality, and increasing the value of the produce. The Agri transport vehicle has been instrumental in improving the timely collection of produce, leading to decreased losses and facilitating effective collaboration across the various stages of the value chain. This ensures that farmers receive better prices for their hard-earned harvests. Additionally, the center creates job opportunities for the local

community. The successful operation of the vegetable processing and trading center is a success story about the power of collaboration and support. Such market infrastructures are huge boon to the local agricultural communities and the farmers as it reduces post-harvest loss, increases profits for the farmers, helps consumers to get better products in lower prices, a win-win model with significant impact on local economy and is the best way cooperatives and local government can collaborate to benefit the farmers for a longer term.

Women’s Digital Empowerment

Heifer implemented two USAID projects on women’s digital empowerment. First project, “Bridging the Gender Digital Gap in Nepal” was implemented in partnership with Pathway Technology and 18 NGO partners across 29 districts of Nepal. The project was able to engage 1.09 million agriculture and livestock farmers to use agriculture based digital technology called- GeoKrishi, with a significant 80% of them being women. This was made possible through the dedicated efforts of over 1300 trained digital facilitators and the establishment of 367 digital hubs, called E-Chautari, across the country.



The second project was research titled “The Use of Digital Technology as an Enabling Strategy for Empowering Women Micro-Entrepreneurs from Marginalized Communities in the Context of COVID-19”, built on the foundation of the first project. The research was conducted with Kathmandu University School of Management and Little Angeles College of Management. This research project employed an innovative Embedded Research Translation (ERT) approach pioneered by the LASER Pulse. This approach ensured that the research findings were not confined to academia but were actively utilized to generate real-world impact and scalability. Following are the key findings from the research:

Factors affecting Digital Technology adoption among women micro entrepreneurs

Contextual Influences:

The inclination of rural women micro-entrepreneurs in Nepal to adopt digital technology is context dependent.

Awareness and Access:

Promoting digital technology adoption among women microentrepreneurs necessitates increased awareness about its advantages, the development of user-friendly applications, ensuring access to essential digital infrastructure, and providing necessary resources.

Training Efficacy:

The introduction of digital technology training as an intervention led to improved usability. Consequently, it no longer played a significant role in determining the intention to use digital technology, contrasting the baseline findings.

The utilization of digital technology demonstrated a strong correlation with women’s empowerment, as evidenced by enhancements in intrinsic agency, collective agency, and their influence over business management and income-related decisions.



Geo-Krishi App users in Chitwan

1307

Digital Facilitators Trained

367

E-Chautaris formed



A vegetable farmer couple from Morang ready to enjoy their meal

Active Projects

1. Innovations in Agricultural and Livestock Value Chains (IALVC)

Duration: April 2023- March 2027

Project Location: Rammechhap , Chitwan, Parbat , Dang, Palpa, Rautahat, Bajhang, Gulmi, Argakhanchi

The Innovations in Agriculture and Livestock Value Chains Development (IALVC) project aims to improve agricultural productivity, increase market linkages, and enhance the livelihoods of smallholder farmers in Nepal through innovative and sustainable approaches. The goal of the project is to enable 60,000 project participants to achieve sustainable living incomes through innovations in agro-livestock value chain development.

2. Value Chains for Inclusive Transformation of Agriculture (VITA)

Duration: June 2022- June 2028

Project Location: Sindhuli, Rautahat, Sarlahi, Mahottari, Dang, Pyuthan, Gulmi, Argakhanchi, Bardiya

The Value Chains for Inclusive Transformation of Agriculture program's goal is to assist 70,000 smallholder producers, including landowners and landless, and laborers involved in selected supply chains. The Inclusion of smallholder producers and poor and vulnerable rural populations will be ensured by selecting supply chains that promise to deliver the biggest benefits to the largest number of poor by propagating technologies with women beneficiaries and youth.

3. The Milky Way: Transforming Dairy Sector of Nepal

Duration: April 23- December 2027

Project Location: Sindhuli

The Milky Way project is the joint initiative of the governments of Nepal, South Korea, and Heifer International aimed at transforming the dairy sector of Nepal through the genetic improvement of cattle. The project is to develop the local dairy sector, commercially and sustainably through the creation of a vertically integrated dairy value chain. This will increase income and job opportunities for local farmers and employees in the dairy sector.



A happy farmer in front of her tunnel farming in Dang

4. Nepal Government Partnership for Economic Growth Project

Duration: Feb 2022 - Jun 2026

Project Location: Arghakhanchi, Baglung, Banke, Bara, Chitwan, Dang, Dhading, Dhanusa Gulmi, Jhapa, Mahottari, Morang, Palpa, Parbat, Pyuthan, Rautahat, Sarlahi, Sindhuli, Surkhet, Syangja, Tanahu, and Udayapur districts

The project collaborates with multiple local governments, leveraging resources from the local governments to implement Heifer's model which cultivates local ownership and ensures continuous investment and engagement even after the project phases out. It also demonstrates confidence in Heifer's systems, ability to manage funds, understanding of participant needs, and ability to partner with local government in the project implementation. The project's goal is to enable 65,200 families to close the living income.

5. Building Resilience through Climate-Smart Livestock Farming in Western Nepal (GRAPE)

Duration: April 2023- October 2024

Project Location: Surkhet, Dailekh, Kailali, Doti

This project addresses a critical challenge in Nepal by reconciling the need to maintain small-scale livestock farming, which is crucial for the livelihoods, income, nutrition, and food security of smallholder farmers, with the imperative to reduce its environmental impact, especially concerning climate change. The project promotes climate-smart livestock farming practices, specifically targeting existing goat and dairy farming methods. The objective is to enhance the resilience of smallholder livestock farmers by implementing profitable and sustainable climate-smart livestock farming enterprises. It focuses on three key aspects of resilience in these communities: building social capital, increasing income, and reducing the environmental footprint of livestock farming.

6. Climate-Smart Dairy Farming Project in Nepal

Duration: October 2022 - September 2024

Project Location: Sindhuli

The project is a collaboration between Heifer Nepal and Heifer Netherlands coupled with technical support from International Livestock Research Institute and National Agriculture Research Center. The project's purpose is to make livestock farming economically and environmentally viable for small-holder dairy farmers. This is underpinned by rigorous research (including feeding management experiment and efficient animal waste recycling methods) and promotion of these evidence-based practices. Though the project is targeted to 100 families, the outcomes and experiences of the project will be replicated and scaled up throughout the country via the Heifer Nepal's signature 'Milky way' program.

7. Digital Mentoring and Continuing Education for Improved Service and Market Linkages among Community Animal Health Workers in Nepal

Duration: December 2023- December 2025

Project Location: Morang, Jhapa, Sunsari, Mahottari, Sarlahi, Siraha, Saptari, Sindhuli, Chitwan, Nawalpur, Dhading, Kaski, Baglung, Rupandehi, Palpa, Arghakhachi, Kapilvastu, Banke, Bardiya, Dang, Pyuthan, Surkhet

The project aims to improve livestock productivity, increase market linkage, and livelihood of smallholder farmers through better access to technologies. By the end of the project period, 125 CAHWs will enhance their technical knowledge and 400 VAHWs will use continuous education platform for knowledge update and better service to farmers. Similarly, the 40 cooperatives will use virtual collection center (VCC) application to organize the collective goat sales and obtain higher livestock prices for their members.

8. Enhancing Milk Quality, Dairy Animal Productivity and Milk Consumption LSIL/REACH

Duration: April 2023- December 2024

Project Location: Palpa, Arghakhanchi, Kapilbastu, Bardiya, Nawalparasi, Chitwan

The overarching goal of the project is to enhance the dairy sector in Nepal by boosting productivity and quality, fostering economic development among farmers, and increasing milk consumption in vulnerable households. The specific objectives include improving dairy animal productivity through technology access, farm management tools, and increased feed supply; enhancing milk quality through the adoption of Good Hygienic Practices (GHP) with price incentives; and addressing barriers to milk consumption for vulnerable household members. The project aims to create a comprehensive impact on the dairy sector, from on-farm improvements to quality control and increased accessibility for vulnerable populations.



Poudel Couple of Tanahun preparing feed for their cattle using an electric chaff cutter

Heifer Cornerstone for Just and Sustainable Development

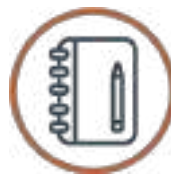
The essential values we apply to our projects are called the Cornerstones for Just and Sustainable Development. Cornerstones stimulate group wisdom, and personal insights and keep people's hearts, minds, and actions balanced, focused, and productive. Using the cornerstone as a framework, project participants develop the attitudes, behaviors, and skills necessary to improve their own lives and gradually transform their communities. Together, these values form the acronym **PASSING GIFTS**, echoing the quintessential trademark practice which is unique to Heifer. The combination of personal leadership and cornerstone allows participants to see how their values connect to the project.



A farmer couple inside vegetable tunnel farming in Dang



Passing on the Gift



Accountability



Sharing & Caring



Sustainability & Self Reliance



Improve Animal & Resource Management



Nutrition & Income



Gender & Family



Genuine Need & Justice



Improving the Environment



Full Participation



Training Education & Communication



Spirituality

Statement of Financial Position

As of July 16, 2023 (Ashad 31, 2080)

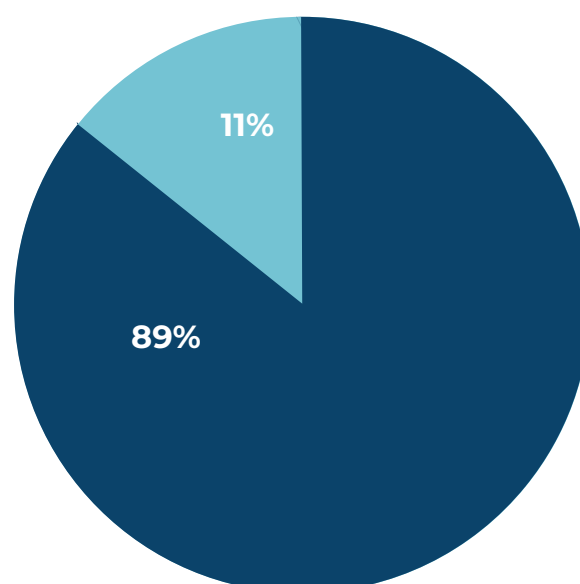
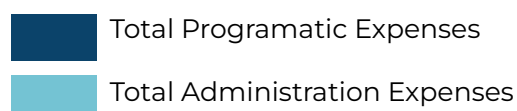
Particulars	Amount in NPR FY 2023
Assets	
Non- Current Assets	45,857,511
Property and Equipments	45,857,511
Current Assets	182,468,214
Cash and Cash Equivalentents	179,513,820
Accounts Receivable and Other Advance	1,448,775
Advance to Projects	771,482
Prepaid Expenses and Deposits	734,137
Total Assets	228,325,725
Liabilities and Reserves	
Accumulated Reserve	(12,671,972)
Unrestricted Funds/Accumulated surplus	692,478
Resticted Funds	(13,364,450)
Non Current Liabilities	105,214,841
Refundable advances	105,214,841
Current Liabilities	135,782,856
Accounts Payable	86,929,915
Provisions	48,796,746
Other liabilities	56,195
Total Liabilities and Reserves	228,325,725

Statement of Income & Expenditure

For the year ended July 16, 2023 (Ashad 31, 2080)

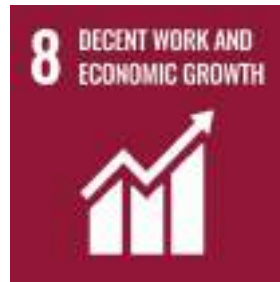
Particulars	Amount in NPR FY 23
Income	
Revenue-Related Party	730,428,916
Other Revenue	7,234,805
Foreign Exchange translation Gain	461,230
Total Incomes	738,124,951
Expenditure	
Program Expenses	659,885,129
Organizational Expenses	
Staff/ Other cost Expenses	41,283,519
General Administration Exp	24,943,785
Depereciation Expenses	12,012,518
Total Expenditures	738,124,951
Surplus/(Deficit) for the year	-
Provision For Income Tax	-
Deferred Tax Expenses/Income	-
Appropriation/Transfer of Surplus/(Deficit):	
Surplus/(Deficit) during the year	-
Surplus/(Deficit) Transferred to Unrestricted Reserves	-

Expenses Based on Functional Allocation



Heifer International Nepal & Sustainable Development Goals

Heifer Projects in Nepal help in achieving the following SDGs :





Kusu Maya, a goat farmer from Parbat feeding her goats

Acronyms

ASDP- Agriculture Sector Development Program

BFI- Banks and Financial Institutions

CSA – Climate Smart Agriculture

GHG- Green House Gases

GHP- Good Hygienic Practices

IALVC- Innovations in Agriculture and Livestock Value Chains Development

LLD- Locally Led Development

MoU- Memorandum of Understanding

NDCs- Nationally Determined Contributions

NPR- Nepalese Rupees

RERP- Rural Enterprises and Remittances Project

RMDC- Rural Microfinance Development Centre

SDGs- Sustainable Development Goals

SEWC- Social Entrepreneur Women Cooperatives

SHG- Self Help Groups

SLVC- Strengthening Smallholder Enterprises of Livestock Value Chain for Poverty Reduction and Economic Growth in Nepal

USD- United States Dollar

VBHCD- Values Based Holistic Community Development

VITA- Value Chains for Inclusive Transformation of Agriculture

Major Donors :

- Abdul Latif Jameel Poverty Action Lab (J-PAL)
- AGCO Agriculture Foundation
- Development Alternatives Incorporated (DAI)
- European Union (EU)
- German Agency for International Cooperation (Giz)
- Government of Nepal
- Heifer International
- Heifer Korea
- Heifer Netherlands
- Korea International Cooperation Agency (KOICA)
- SUOMI Finland
- University of Florida
- University of California Davis (UC Davis)
- USAID/FtF/LSIL
- USAID/Women Connect

Stakeholders and Partners :

- Agricultural Development Bank Limited (ADBL)
- Airawoti Rural Municipality
- Balara Municipality
- Barbardiya Municipality
- Bright Nepal
- Brindawan Municipality
- Central Dairy Cooperative Association Limited Nepal (CDCAN)
- Chandrapur Municipality
- Dairy Development Cooperation (DDC)
- Dairy Industries Association (DIA) Nepal
- Dalit Utthan Jana Chetana Karyakram (DUAO)
- Dudhauri Municipality
- Environment and Rural Development Center (ENRUDEC)
- Everest Bank Limited
- Fulbari Integrated Rural Development Organization (FIRDO)
- Gadhawa Rural Municipality
- Gadhimai Municipality
- Galchi Rural Municipality
- Global IME Bank Limited
- Golanjor Rural Municipality
- Government of Nepal, Ministry of Agriculture and Livestock Development (MoALD)
- Government of Nepal, Ministry of Health and Population (MoHP)
- Grahmin Aapasi Bikash (RMD)
- Hamro Prayas Nepal, Sindhuli (HPNS)
- Himalayan Bank Limited
- Human And National Development Society (HANDS)
- Indreni Samaj Kendra (ISK)
- International Fund for Agricultural Development (IFAD)





- International Livestock Research Institute (ILRI)
- Jan Kalyan Yuwa Samittee (JKYS)
- Kaligandaki Rural Municipality
- Kamana Sewa Bikash Bank Limited
- Khajura Rural Municipality
- Khaniyabas Rural Municipality
- Laxmi Bank Limited
- Machhapuchchhre Bank Limited
- Mahottari Rural Municipality
- Mallarani Rural Development Concern Center (MRDCC)
- Malarani Rural Municipality
- Matihani Municipality
- Mithila Jagaran Samaj (MJS)
- Nabil Bank Limited
- National Agricultural Research Council (NARC)
- National Cooperative Bank Limited
- Nepal Dairy
- Nepal Dairy Association (NDA)
- Nepal Integrated Development Society (NIDS)
- Nepal SBI Bank Limited
- Nisdi Rural Municipality
- Pathway Technology
- Pawan Dairy
- People Development Mobilization Center (PDMC)
- Pipara Rural Municipality
- Prabhu Bank Limited
- Rajpur Rural Municipality
- Rambha Rural Municipality
- Ramgopalpur Municipality
- Rastriya Banijya Bank Limited
- Resource Identification and Management Society (RIMS)
- Ratauli Yuva Club (RYC)
- Ribdikot Rural Municipality
- Rural and Community Health Development Center (RCHDC)
- Rural Economic Development Association (REDA)
- Rural Microfinance Development Centre (RMDC)
- Rural Women Development Center (RWDC)
- Samaj Bikash Jan Chetana Kendra (SODEC)
- Sahayatri Samaj Nepal (SSN)
- Siddhartha Bank Limited
- Sindhuli Integrated Development Service (SIDS)
- Social Awareness and Development Campaign (SADEC)
- Social Resource Development Center (SRDC-Nepal)
- Society Upliftment Welfare Association (SUWA)
- Swargadwari Municipality
- Thakurababa Municipality
- Tinau Rural Municipality
- Tinpatan Rural Municipality
- Tripurasundari Rural Municipality
- Tufts University



Heifer International Nepal
GPO Box: 6043
Hattiban, Lalitpur - 15
T: +977-1-5913120 / 5911873
E: heifer.nepal@heifer.org
W: heifernepal.org